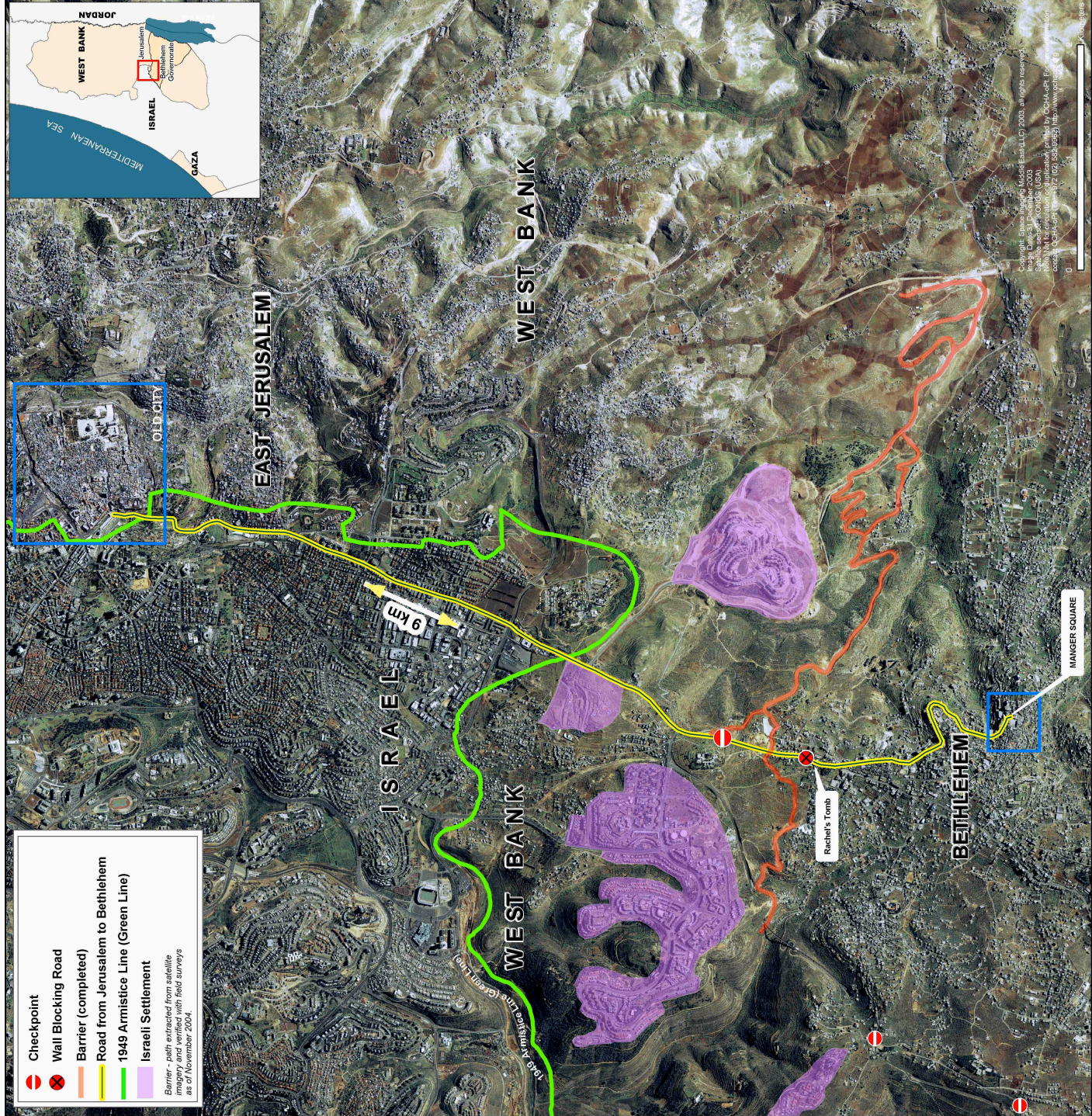


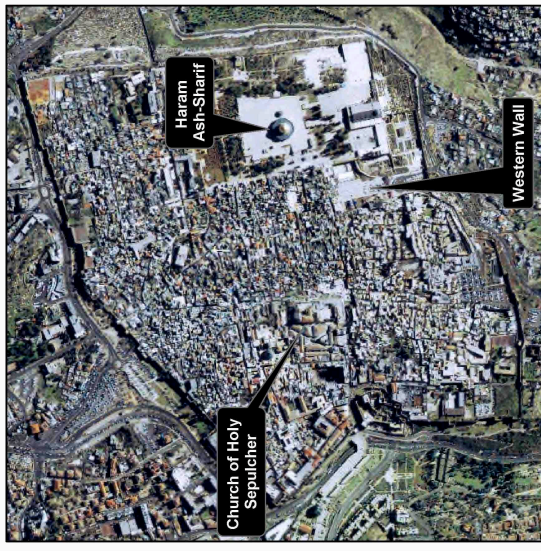


THE ROAD FROM JERUSALEM TO BETHLEHEM

9 km (5.6 miles)



- Checkpoint
 - Wall Blocking Road
 - Barrier (completed)
 - Road from Jerusalem to Bethlehem
 - 1949 Armistice Line (Green Line)
 - Israeli Settlement
- Barrier - path extracted from satellite imagery and field surveys as of November 2004.



OLD CITY, JERUSALEM
 Kontos Satellite image, December 2003
 Copyright: Space Imaging, Boulder, East, IL, CO, 2003, all rights reserved.



MANGER SQUARE, BETHLEHEM
 Aerial Photo, October 2002
 Aerial Photo: Courtesy of Bethlehem Municipality

Cartography: OCHA - oPI - December 2004.
 Base date: PA MoP, July 2000, OCHA update 2004
 For comments contact ochapopi@un.org or Tel: +972 (02) 582-9962
<http://www.ochaopt.org>

The designations employed on this map do not imply the expression of any opinion whatsoever on the part of the United Nations concerning the legal status of any country, territory, city or area or of its authorities, or concerning the delimitation of its frontiers or boundaries.